

wb 1st March 2021

Newsletter #9



DID YOU KNOW?...

Up to 3 pints of oil are used in the manufacture of a new printer cartridge. When you recycle cartridges, you can help reduce this figure as we reuse the original cartridge wherever possible!

Be a hero and helps us prevent littering..



Order Your School's Ink Bin at
www.theinkbin.co.uk/schools



This is Sophie and Brandon- we have uploaded a full report on their amazing efforts which is available on our website. Sophie and Brandon's stunning stats-

- 835 bin bags of rubbish collected since end of June 2020
- Oldest piece of litter: 1986
- Raised £2500 in two litter picking fundraisers for a local wildlife charity and two Christmas appeals
- Litter picks everyday
- Trying to start a litter picking group for others in our area to inspire and help to join in to Keep Blyth Clean!
- 961 followers inspired by their efforts

You can follow their amazing work on Twitter-Sophie and Brandon's Corona Diary



Spring has sprung! The sun is finally here, so stop using your tumble dryer and make great use of the earth's natural resources!

Be sure to upload your photos and any other lockdown activities you have been getting up to and tag us on Facebook or Instagram

"The greatest threat to our planet, is the belief that someone else will save it."

-Robert Swan

THIS WEEK WE FOCUS ON LITTER PICKING...

What is litter?

Litter is nothing but a piece of waste or rubbish that has been thrown away; the difference being that it is without consent and at the wrong location, without even considering if it can be recycled.

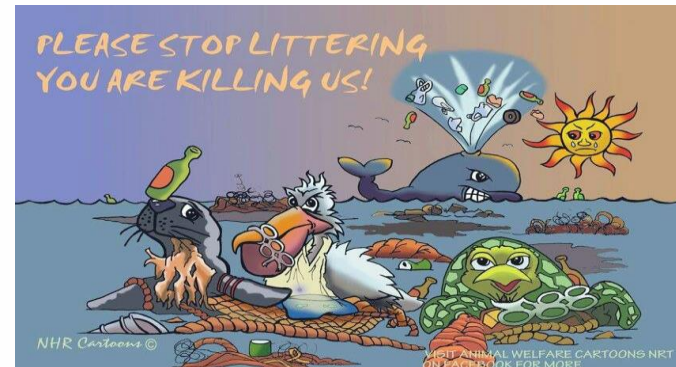
Littering simply means throwing away objects on the ground or leaving them lying there instead of disposing them in rubbish bins or recycling bins.

The waste that originates from houses, industries and factories should be placed either in a recycling bin, used for compost or placed at a waste disposal centre.

Dropping litter shows a lack of respect for your friends and neighbours, and spoils the community for everybody else.

As well as making places look messy, litter can attract rats and insects, which can spread diseases.

It is extremely harmful for our planet and everyone in it, including us humans and our animals!



WHAT AFFECT IS LITTERING HAVING ON OUR PLANET?

- Littering creates visual pollution
- Cleaning litter is very costly to the economy
- Littering leads to tension in society
- Littering can lead to all sorts of pollution in the: Soil, Water and Air.

keeping our earth clean

Keeping our earth clean is the responsibility of every individual. Each of us must be aware of our own behaviour and how it affects the environment.

We can do this by developing a sense of care and ownership for the world in which we live - its air, water, land and all its inhabitants.

Anyone can have a positive influence on the environment by helping to reduce the amount of litter and pollution, which is why we need to educate everyone.

The truth behind littering...

- 9 billion tons of litter ends up in the ocean every year.
- 75% of people admitted that they have littered in the past 5 years.
- The most common object found during a litter clean-up is fast food waste
- Litter can hurt your pets - over 70,000 pets and wild animals are hurt in Britain every year because of litter.

THE INK BIN WORDSEARCH

L	K	D	I	S	O	I	B	Q	U
E	Y	T	I	N	U	M	M	O	C
G	Z	S	A	C	G	A	N	W	P
S	O	U	K	W	X	W	B	R	E
V	L	J	I	C	A	H	E	Y	X
T	P	H	K	S	A	C	A	M	R
E	Y	J	T	R	Y	R	R	O	Q
Y	M	E	M	C	L	S	E	N	N
D	F	F	L	J	F	P	T	O	F
S	U	E	D	E	I	Y	A	C	V
L	G	S	O	I	L	V	W	E	L
N	O	I	T	U	L	L	O	P	Z
R	B	P	C	B	F	C	C	R	B
W	Z	X	I	H	Z	Z	I	A	X
F	Q	N	B	R	A	A	M	C	W

CAN YOU FIND THESE WORDS...

HARMFUL COMMUNITY WASTE SOIL RECYCLE

WATER BIN ECONOMY POLLUTION

HOW WE CAN PREVENT LITTERING

- Set an example by not littering.
- Pick up one piece of litter each day.
- Pick up after your pet.
- Every week on the bin collection day, pick up all the litter in front of your house (it also helps the bin men!)
- Plant and maintain flowers along the pavements and paths as people tend to litter less in areas that have been beautified.
- Carry a litter bag in your car and on walks or hikes.
- Work with your neighbours to keep your area clean.
- Participate in community clean up events, if there are the clean up events, why not take action and set one up yourself?

Get involved, download our litter activity sheet to start saving the world....